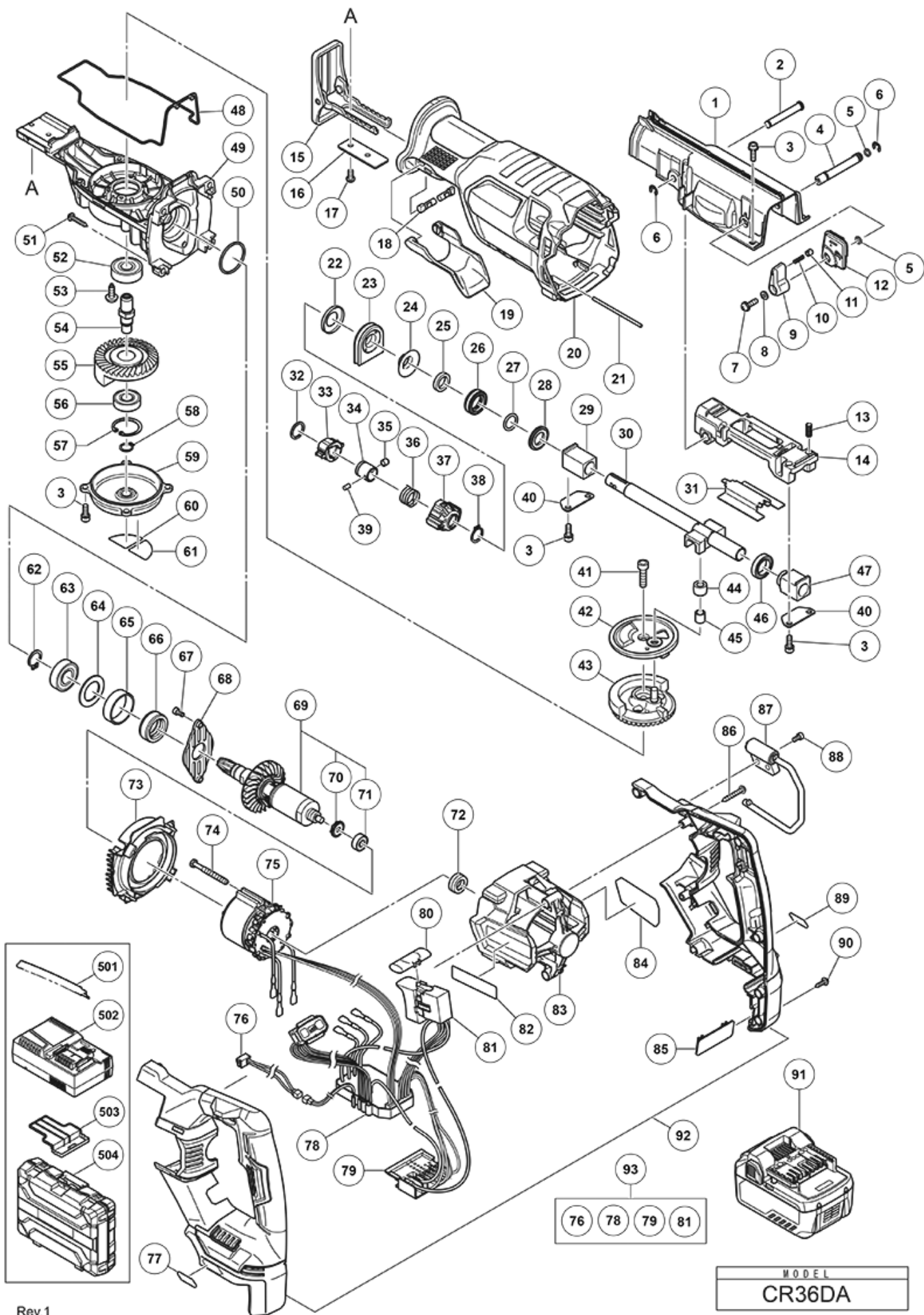


nÂ°	Artikel	Aantal gebruikt
*91	371750 BATTERY BSL 36A18 (EUROPE.AUS.NZL)	2
*501	370683 CURVED BLADES NO.141(S)150L P.14(3 PCS) (NEW 752043)	1
1	373501 UPPER COVER NEW	1
2	373488 SHAFT (A) NEW	1
3	305574 HEX.SOCKET HD.BOLT M5X16	12
4	373497 CHANGE SHAFT NEW	1
5	872822 O-RING (S-5)	2
6	955479 RETAINING RING (E-TYPE) FOR D6 SHAFT	2
7	307127 SEAL LOCK SCREW (W/SP. WASHER) M4X12	1
8	323210 BOLT WASHER M4 (BLACK)	1
9	373503 CHANGE KNOB NEW	1
10	373499 SPRING (B) NEW	1
11	373500 SPRING CAP NEW	1
12	373508 LEVER PLATE NEW	1
13	373490 SPRING (A) NEW	2
14	373487 PLUNGER HOLDER NEW	1
15	371382 BASE NEW	1
16	371383 BASE PLATE NEW	1
17	332662 HEX. SOCKET BOLT M5X12 NEW	2
18	373502 BASE LEVER SHAFT NEW	2
19	373504 BASE LEVER NEW	1
20	373506 FRONT COVER NEW	1
21	373507 ADJUSTING PIN NEW	1
22	373477 SEAL WASHER NEW	1
23	373478 DUST SEAL NEW	1
24	373479 SLEEVE PLATE NEW	1
25	373480 FELT WASHER NEW	1
26	373481 SEAL SLEEVE (A) NEW	1
27	373482 O-RING NEW	1
28	373483 SEAL SLEEVE (B) NEW	1
29	373484 METAL (A) NEW	1
30	373486 PLUNGER NEW	1
31	373489 PLATE (A) NEW	1
32	371368 SPIRAL RETAINING RING D16 NEW	1
33	373475 BLADE HOLDER NEW	1
34	371381 SLEEVE NEW	1
35	371378 HOLDER PIN NEW	1
36	371379 BLADE SPRING NEW	1

nÂ°	Artikel	Aantal gebruikt
37	373476 BLADE HOLDER COVER NEW	1
38	371367 RETAINING RING FOR D13 SHAFT NEW	1
39	371380 PIN NEW	1
40	373491 METAL PLATE NEW	2
41	371991 SEAL LOCK HEX.SOCKET HD. BOLT M6X20 NEW	1
42	373492 ORBITAL GUIDE NEW	1
43	373494 GEAR NEW	1
44	373495 CONNECTING PIECE NEW	1
45	373959 NEEDLE BEARING NEW	1
46	6803BB BALL BEARING 6803 NEW	1
47	373485 METAL (A) NEW	1
48	373498 PACKING NEW	1
49	373518 GEAR COVER NEW	1
50	373527 O-RING (I.D 31.5) NEW	1
51	328707 TAPPING SCREW D5X30 (W/FLANGE) BLACK	4
52	6201VV BALL BEARING 6201VVCMP2L	1
53	301936 SLOTTED HD. SCREW (SEAL LOCK) M4X10	2
54	373493 SPINDLE NEW	1
55	373509 COUNTER GEAR NEW	1
56	6001VV BALL BEARING 6001VV	1
57	939555 RETAINING RING FOR D28 HOLE (10 PCS)	1
58	939542 RETAINING RING FOR D12 (10 PCS)	1
59	373510 UNDER COVER NEW	1
60	CAUTION SEAL (B)	1
61	CAUTION SEAL (A)	1
62	939544 RETAINING RING FOR D15 SHAFT (10 PCS)	1
63	6002VV BALL BEARING 6002VVCMP2L	1
64	373511 WASHER D34.8 NEW	1
65	373512 BUSH NEW	1
66	373513 DAMPER NEW	1
67	949818 HEX.SOCKET HD.BOLT M5X8 (10 PCS)	2
68	373514 BEARING COVER NEW	1
69	361096 ROTOR ASS'Y NEW	1
70	373515 DUST SEAL (606) NEW	1
71	606ZZM BALL BEARING 606ZZMC3PS2S	1
72	373516 RUBBER BUSH NEW	1
73	373517 FAN GUIDE NEW	1
74	981824 HEX.HD. TAPPING SCREW D4X45	2

nÂ°	Artikel	Aantal gebruikt
75	341012 STATOR SENSOR PCB NEW	1
76	373528 LED NEW	1
78	373524 CONTROLLER NEW	1
79	372228 BATTERY TERMINAL NEW	1
80	319760 PUSHING BUTTON	1
81	373522 DC-SPEED CONTROL SWITCH NEW	1
83	373519 HOUSING NEW	1
86	305490 TAPPING SCREW D4X30 (W/FLANGE) BLACK	2
87	371387 HOOK NEW	1
88	371992 SEAL LOCK HEX.SOCKET HD. BOLT M5X10 NEW	2
90	339250 TAPPING SCREW D4X20 (W/FLANGE) NEW	6
92	373520 HANDLE SET (A+B) NEW	1
93	373523 SWITCH CONTROLLER ASS'Y NEW	1
502	CHARGER (MODEL UC 18YSL3)	1
503	329897 BATTERY COVER	1
504	373526 PLASTIC CARRYING CASE NEW	1



Rev.1