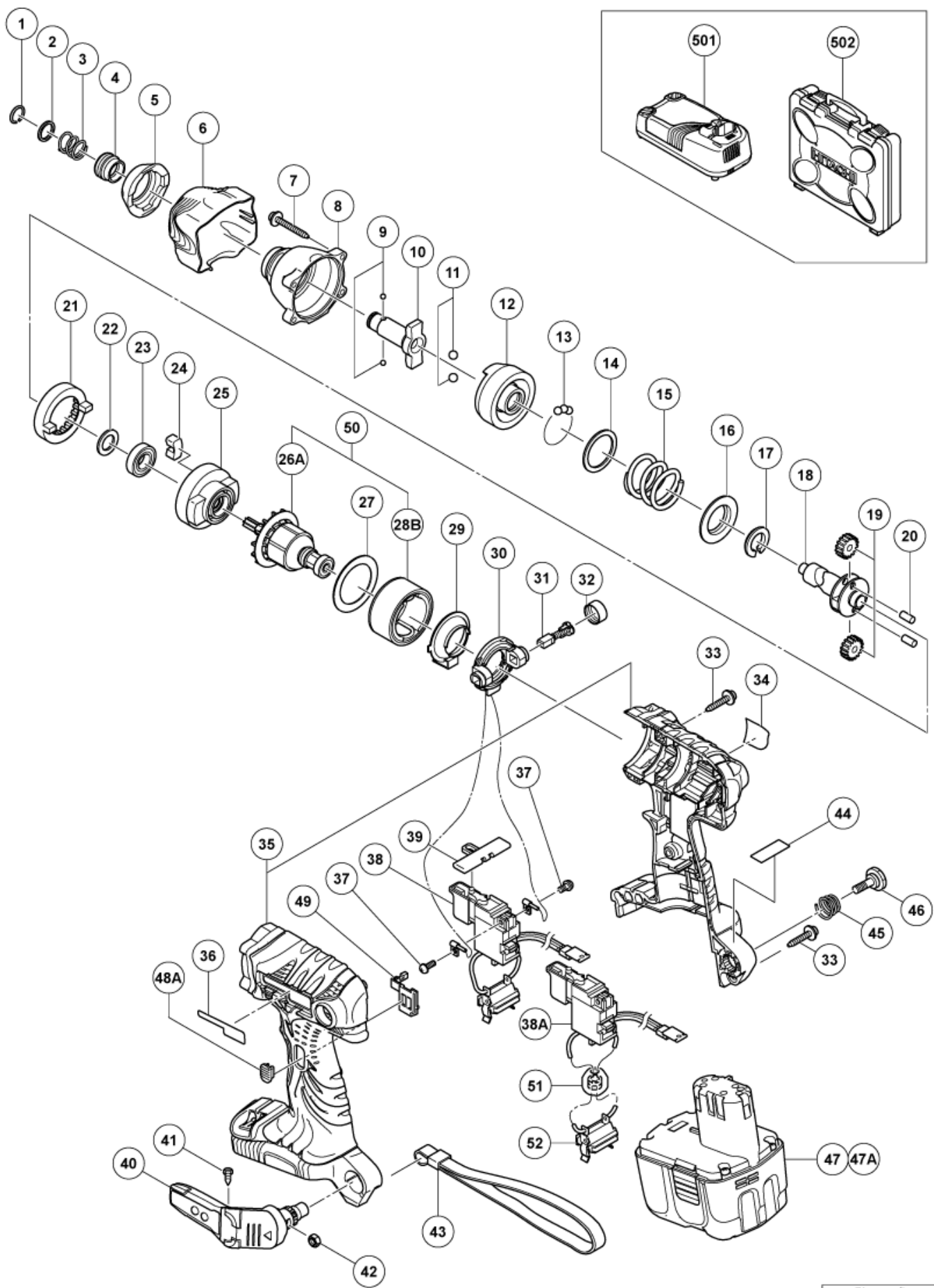


nÂ°	Artikel	Aantal gebruikt
	STANDARD ACCESSORIES	0
	OPTIONAL ACCESSORIES	0
1	315984 RETAINING RING	1
2	315983 WASHER (D)	1
3	321657 GUIDE SPRING (A) (OLD 322716)	1
4	322717 GUIDE SLEEVE (D)	1
5	324238 FRONT CAP (C)	1
6	324239 PROTECTOR (D)	1
7	307851 TAPPING SCREW D4X30 (W/SP. WASHER) BLACK	4
8	324216 HAMMER CASE	1
9	319535 STEEL BALL D3.5 (10 PCS)	2
10	324236 ANVIL	1
11	959154 STEEL BALL D5.556 (10 PCS) (OLD 939277Z)	2
12	324218 HAMMER	1
13	959148 STEEL BALL D3.175 (10 PCS)	2
14	315978 WASHER (J)	1
15	324224 HAMMER SPRING (F)	1
16	316172 WASHER (S)	1
17	324222 STOPPER (B)	1
18	324232 SPINDLE	1
19	326295 IDLE GEAR SET (2 PCS) (OLD 321667)	2
20	324234 NEEDLE ROLLER (A)	2
21	320877 RING GEAR (C)	1
22	319911 WASHER (E)	1
23	6901VV BALL BEARING 6901VVCMP2L	1
24	324230 DAMPER (A)	2
25	324229 INNER COVER (B)	1
26A	360928 ARMATURE & PINION SET	1
27	324607 SIDE YOKE (A)	1
28B	334901 MAGNET (J) ASS'Y (OLD 333551)	1
29	324228 DUST GUARD FIN (B)	1
30	324226 BRUSH BLOCK	1
31	999054 CARBON BRUSH 5X6X11.5 (1 PAIR)	2
32	319918 BRUSH CAP	2
33	302086 TAPPING SCREW D4X20 (W/FLANGE) BLACK	8
34	NAME PLATE	1
35	327050 HOUSING SET (A+B)	1
35	324237 HOUSING SET (A+B)	1

nÂ°	Artikel	Aantal gebruikt
36	326238 HITACHI PLATE	1
37	994532 MACHINE SCREW (W/SP.WASHER) M3X5	2
38	321533 DC-SPEED CONTROL SWITCH (OLD 324227)	1
38A	334885 DC-SPEED CONTROL SWITCH	1
39	324225 PUSHING BUTTON (B)	1
40	321918 HOOK ASS'Y (W/LIGHT)	1
41	321672 TAPPING SCREW D2X6	2
42	320288 V-LOCK NUT M5	1
43	306952 STRAP (BLACK)	1
44	LABEL (WEEE)	1
45	319926 HOOK SPRING	1
46	320881 SPECIAL SCREW M5 (A)	1
47	326823 BATTERY BCL 1430 (USA,CAN)	2
47A	326824 BATTERY BCL 1430 (EUROPE,AUS,NZL)	2
48A	327053 LEVER (B)	1
49	327052 LEVER (A)	1
50	334152 ARMATURE & MAGNET ASS'Y	1
51	334870 FERRITE SUPPORT SET	1
52	329678 BATTERY TERMINAL	1
501	CHARGER (MODEL UC 18YRL)	1
502	323230 CASE	1
601	321823 DRILL CHUCK AND ADAPTER SET	1
602	309922 GREASE FOR IMPACT DRIVER (500G)	1
603	992671 + DRIVER BIT (B) NO.2 50L	1
604	992672 + DRIVER BIT (B) NO.3 50L	1
605	996177 NON-MAGNETIC HEX. SOCKET 8MM 65L	1
606	985329 NON-MAGNETIC HEX. SOCKET 10MM 65L	1
607	996178 NON-MAGNETIC HEX. SOCKET 12MM 65L	1
608	996179 NON-MAGNETIC HEX. SOCKET 13MM 65L	1
609	996180 NON-MAGNETIC HEX. SOCKET 14MM 65L	1
610	996185 NON-MAGNETIC HEX. SOCKET 15MM 65L	1
611	996181 NON-MAGNETIC HEX. SOCKET 16MM 65L	1
612	996182 NON-MAGNETIC HEX. SOCKET 17MM 65L	1
613	996186 NON-MAGNETIC HEX. SOCKET 19MM 65L	1
614	996197 HEX. SOCKET (LONG) 21MMX166L	1
615	996184 BIT PIECE	1
616	987575 CHUCK WRENCH FOR 10VLB-D,10VLR-D	1
617	930119 CHUCK WRENCH 6.5G	1

nÂ°	Artikel	Aantal gebruikt
618	307543 CHUCK ADAPTER	1



Rev.7

形名
WH14DL